

ACCESSORIES

Boomerang Plate

ITEM INFORMATION

Item#	Designator	Price
BM10002P	-BM	\$9 each

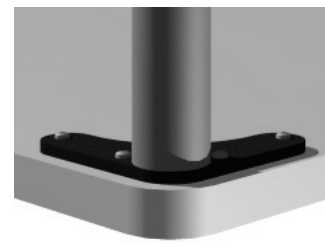
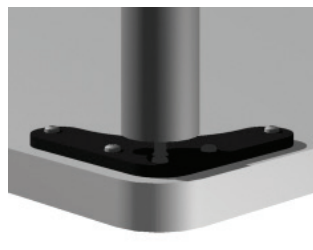
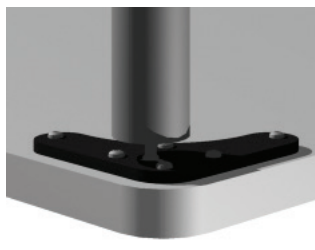
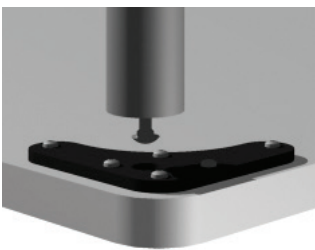


SPECIFICATIONS

- Available on 2" Classic Column Leg

How to Install:

Simple threaded keyhole attachment allows legs to be easily removed for storage and quickly reassembled for use.



1. Thread bolt part way into leg.
2. Insert head of bolt into keyhole
3. Slide leg to the right about 1/2".
4. Turn leg until tight on bracket.

Reverse sequence to disassemble for storage with mounting bracket remaining on table top.

Find intended use warranty information Online at www.ValleyDesign.biz/Warranty