

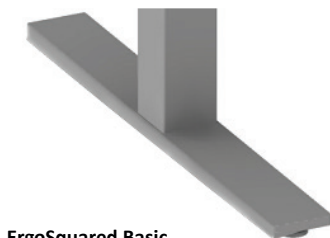
ERGOSQUARED SERIES

Fixed Height End Base 3" x 3" Column

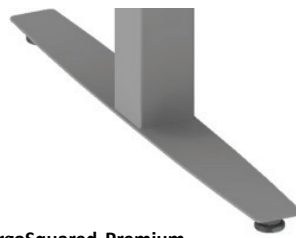
ITEM INFORMATION

Item #	Base Spread	Max. Table Size	Mounting Plate	Basic Foot Price	Premium Foot Price
70QE18P	18"	24" x 72"	8" x 8"	\$180	\$238
70QE22P	22"	30" x 72"	8" x 8"	\$187	\$243
70QE26P	26"	36" x 72"	8" x 8"	\$191	\$247
70QE26.2P	26"	38" x 96"	8" x 8"	\$300	N/A
70QE32.2P	32"	44" x 96"	8" x 8"	\$322	N/A
70QE36.2P	36"	48" x 96"	8" x 8"	\$333	N/A

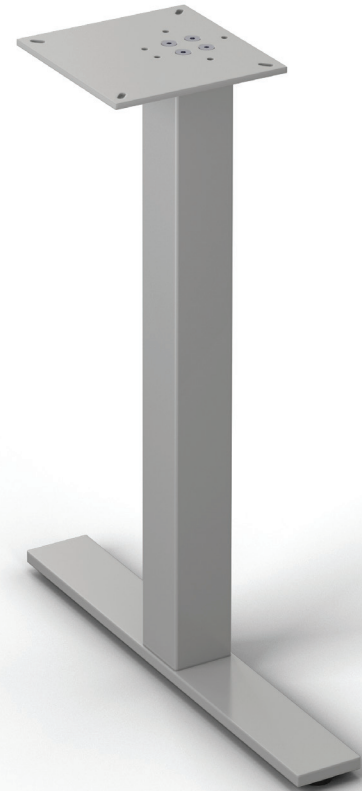
AVAILABLE FOOT DESIGNS



ErgoSquared Basic



ErgoSquared Premium



SPECIFICATIONS

Base Height	27¼" (with levelers and without table top)
Column	70 x 70 x 2 mm (2 ¾") dia. square tubular steel
Cantilever (CT) Option	Column will be offset 3" from center of foot
Main Bar/Feet	ErgoSquared Basic: 3" x ½", machined steel bar ErgoSquared Premium: 3" x ½", machined steel bar
Leveler	⅝"-18 x ½" long threaded stem with black nylon end
Mounting Plates	¼" steel mounting plate
Assembly Method	Set of four (4) 8mm bolts both at the top and bottom of each column
Shipped	Price includes 1 base Not assembled

AVAILABLE OPTIONS

- Genu-Flip Kit +\$326
- Nester Mechanism +\$374 per set
- CT Option +\$17
- Locking Casters (2") +\$32 (3") +\$40 (premium) +\$40
- Custom Height +\$58
- Wire Management Door +\$114
- Magnetic Wire Manager Cover +\$48